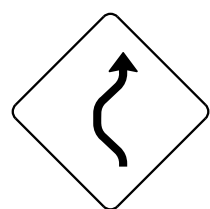


28-APR-2017 14:02 \\AG03SDCW\F00008.net.ads.state.in.us\13\SHARED\StandDraw\DESIGN STANDARDS\StandDraw\Traffic Control\Work Zones\Current\TWZ19-20170305.DGN

ALT.

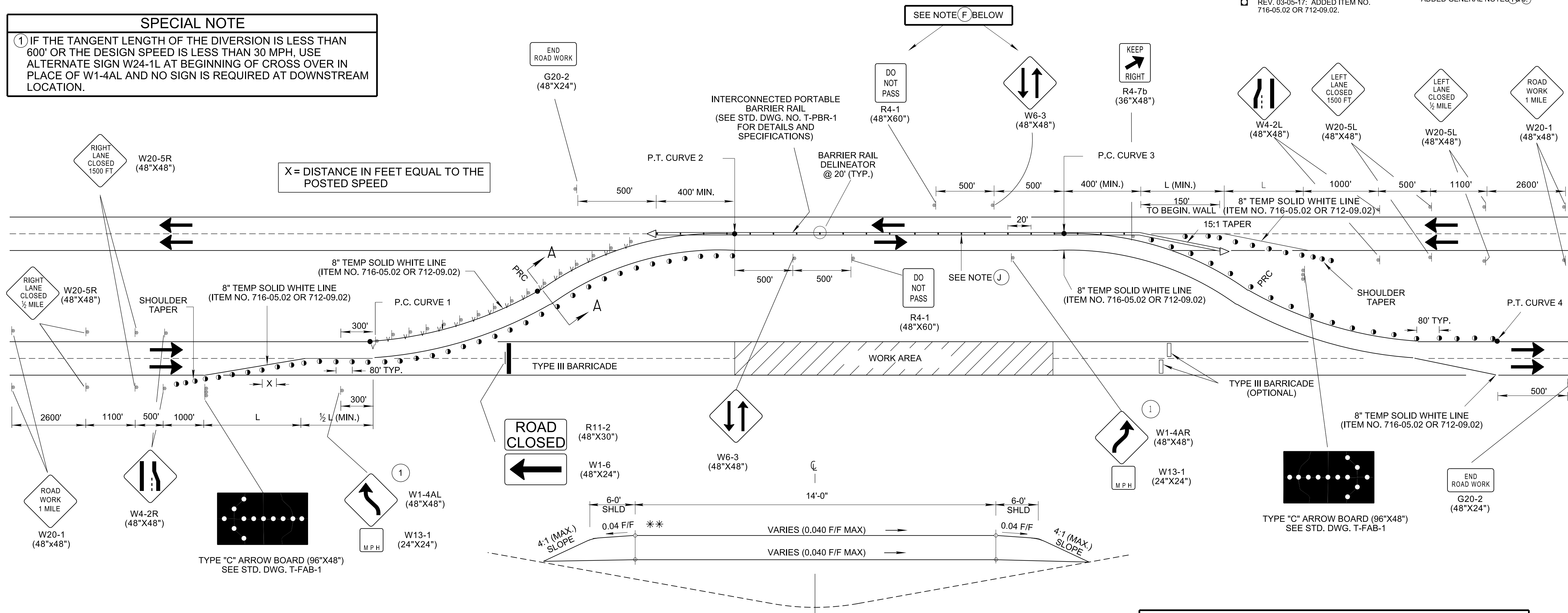


W24-1L  
(48"X48")

## MEDIAN CROSS-OVER DETAIL ON DIVIDED HIGHWAYS

### SPECIAL NOTE

- ① IF THE TANGENT LENGTH OF THE DIVERSION IS LESS THAN 600' OR THE DESIGN SPEED IS LESS THAN 30 MPH, USE ALTERNATE SIGN W24-1L AT BEGINNING OF CROSS OVER IN PLACE OF W1-4AL AND NO SIGN IS REQUIRED AT DOWNSTREAM LOCATION.



### GENERAL NOTES

- (A) CROSS-OVERS SHALL BE DESIGNED FOR SPEEDS NOT LESS THAN 10 MILES PER HOUR BELOW THE POSTED SPEED. THE GEOMETRY DETAIL FOR CROSS-OVER SHOWN ON STANDARD DRAWING T-WZ-20 IS FOR A TANGENT DIVIDED HIGHWAY SECTION ONLY. THE DESIGNER SHALL PROVIDE GEOMETRIC DETAILS OF CROSS-OVER(S) ON CURVED DIVIDED HIGHWAY SECTIONS.
- (B) ADVISORY SPEED PLATES ON REVERSE CURVE SIGNS (W1-4) SHALL BE 10 MILES PER HOUR LESS THAN THE DESIGN SPEED OF THE CROSS-OVER.
- (C) TEMPORARY CROSSDRAINS SHALL BE PROVIDED WHERE CROSS-OVER CROSSES THE LOW POINT OF THE DEPRESSED MEDIAN. THE DESIGNER WILL PROVIDE THE LENGTH AND SIZE OF THESE CROSSDRAINS ON THE PLANS. THESE CROSSDRAINS SHALL BE PAID FOR UNDER ITEM NOS. 621-03.02 THROUGH 621-03.10.
- (D) PAVEMENT SECTION OF TEMPORARY MEDIAN CROSS-OVER IS SHOWN ON TYPICAL SECTION SHEETS OF PLANS.
- (E) SEE STANDARD DRAWING T-WZ-10 FOR OTHER NEEDED ADVANCE WARNING SIGNS.
- (F) TWO-WAY TRAFFIC SYMBOL SIGN (W6-3) AND DO NOT PASS SIGN (R4-1) TO BE PLACED AT 1#2 MILE INTERVALS ON TWO-WAY TEMPORARY TRAFFIC SECTION.
- (G) A SECOND ARROW BOARD MAY BE USED WHEN GEOMETRIC CONDITIONS LIMITS THE VISIBILITY OF A LANE CLOSURE.
- (H) TAPER LENGTH SHOWN FOR THE PORTABLE BARRIER RAIL IS A MINIMUM. PORTABLE BARRIER RAIL SHOULD BE EXTENDED BEYOND THE CLEAR ZONE OR BE SHIELDED WITH AN ATTENUATOR WHEN IT IS NOT FEASIBLE TO EXTEND THE PORTABLE BARRIER RAIL. SEE STANDARD DRAWING S-CZ-1 FOR CLEAR ZONE DISTANCE.
- (I) BARRIER RAIL DELINEATORS (ITEM NO.712-04.50) SHALL BE USED ON PORTABLE BARRIER RAIL. REFER TO THE QUALIFIED PRODUCT LIST FOR APPROVED BARRIER RAIL DELINEATORS. DIFFERENT TYPES OF BARRIER RAIL DELINEATORS SHOULD NOT BE MIXED IN THE SAME LINE.
- (J) RAISED PAVEMENT MARKERS SHOULD NOT BE USED ON RIGHT EDGE LINE.

### SECTION A-A

### TYPICAL SECTION OF TEMPORARY MEDIAN CROSS-OVER

#### COMPUTATION FOR DISTANCE L

$$L = W \times S$$

L = TAPER LENGTH IN FEET  
W = WIDTH OF OFFSET IN FEET  
S = POSTED SPEED

### CHANNELIZATION DEVICE LEGEND

	FLEXIBLE DRUMS
	VERTICAL PANELS
	SIGN SUPPORT
	DIRECTION OF TRAFFIC
	WORK SITE
	BARRIER RAIL DELINEATOR (ITEM NO. 712-04.50, PER EACH)
	FLASHING YELLOW ARROW BOARD (SEE STD. DWG. NO. T-FAB-1, FOR DETAILS AND SPECIFICATIONS)
	ATTENUATOR

\*\* THE SLOPES OF THE SHOULDER AND THE ROADWAY PAVEMENT SHALL NOT EXCEED AN ALGEBRAIC DIFFERENCE OF 0.07 FOOT PER FOOT.

MINOR REVISION -- FHWA  
APPROVAL NOT REQUIRED.

STATE OF TENNESSEE  
DEPARTMENT OF  
TRANSPORTATION

MEDIAN  
CROSS-OVER  
DETAIL ON  
DIVIDED HIGHWAYS

10-26-98

T-WZ-19

- REV. 10-06-06: CHANGED ITEM NO. FOR BARRIER RAIL DELINEATOR. ADDED GENERAL NOTE (K). DELETED GENERAL NOTE (J).
- REV. 03-13-09: CHANGED GENERAL NOTE (H) AND ATTENUATOR LEGEND DESCRIPTION.
- REV. 4-2-12: ADDED NOTE (I) AND SIGN W24-1.
- REV. 03-05-17: ADDED ITEM NO. 716-05.02 OR 712-09.02.
- REV. 5-27-01: CHANGED PAY ITEMS GENERAL NOTE (C).
- REV. 7-29-03: CHANGED GENERAL NOTE (H).
- REV. 9-1-05: REMOVED TYPE "C" WARNING LIGHTS FROM FLEXIBLE DRUMS IN TAPER.
- REV. 5-12-06: REPLACED VERTICAL PANEL WITH BARRIER RAIL DELINEATORS. ADDED GENERAL NOTES (I) & (J).